

BIBLICAL SURVEY

Genesis: Creation and Evolution (Pt 3)

Biblical-Literacy.com

© Copyright 2010 by W. Mark Lanier . Permission hereby granted to reprint this document in its entirety without change, with reference given, and not for financial profit

Creation vs. Evolution

Does it really matter?



Integrity of the Bible

Existence of God

ISSUE

SINCE
CREATIONISM
MEANS “GOD IS
REAL” DOES
EVOLUTION DENY
GOD’S EXISTENCE?

ISSUE

AN ANALYSIS OF
THE SCIENCE
BEHIND HUMAN
EVOLUTION

How do we “know” God exists?

Feelings?

Well reasoned
philosophy or
logic?

The proof of
creationism?

Unexplained
occurrences?

The exactness
of creation?

How do we “know” God exists?

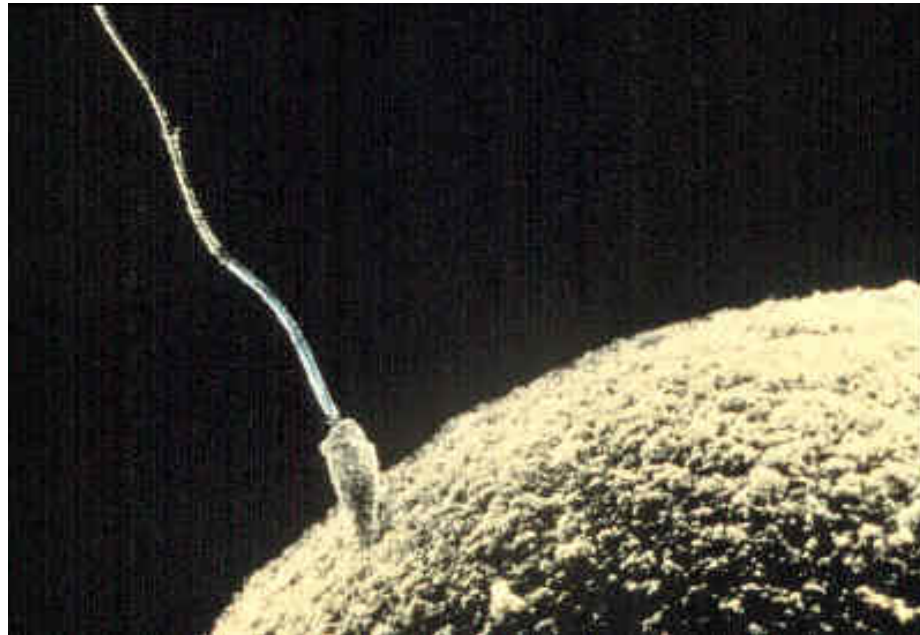


If our children decide evolution is “true”
should they leave their faith?

Absolutely not!

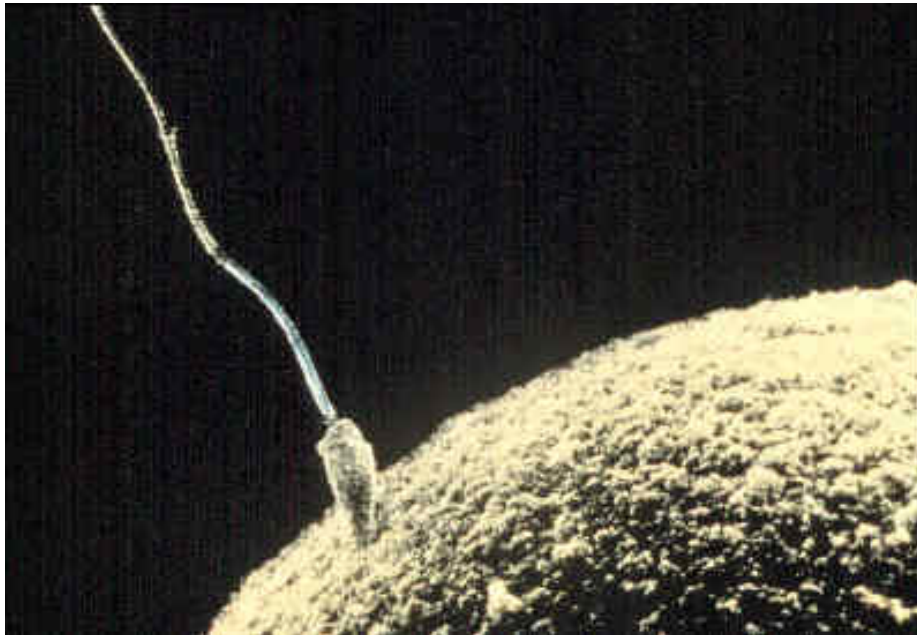
Let us get a couple of terms down

God works in and through nature



For you formed my inward parts; you knitted me together in my mother's womb. I praise you for I am fearfully and wonderfully made. (Ps 139)

God works in and through nature

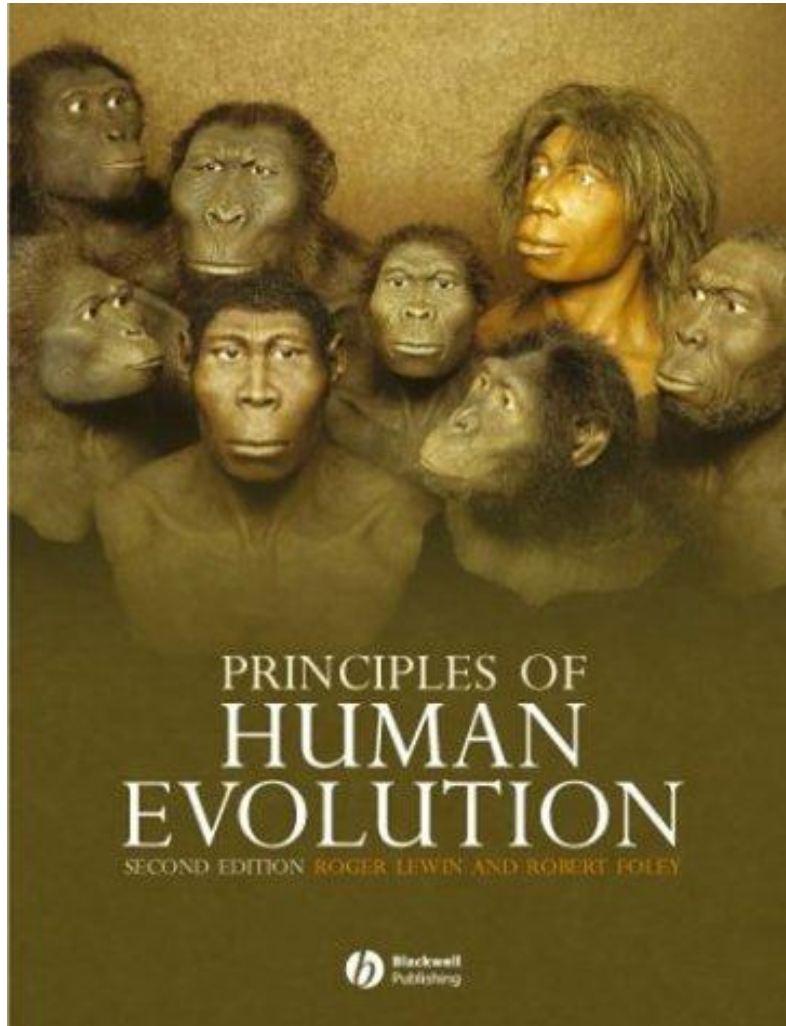


For you formed my inward parts; you knitted me together in my mother's womb. I praise you for I am fearfully and wonderfully made. (Ps 139)

Absolutely not!

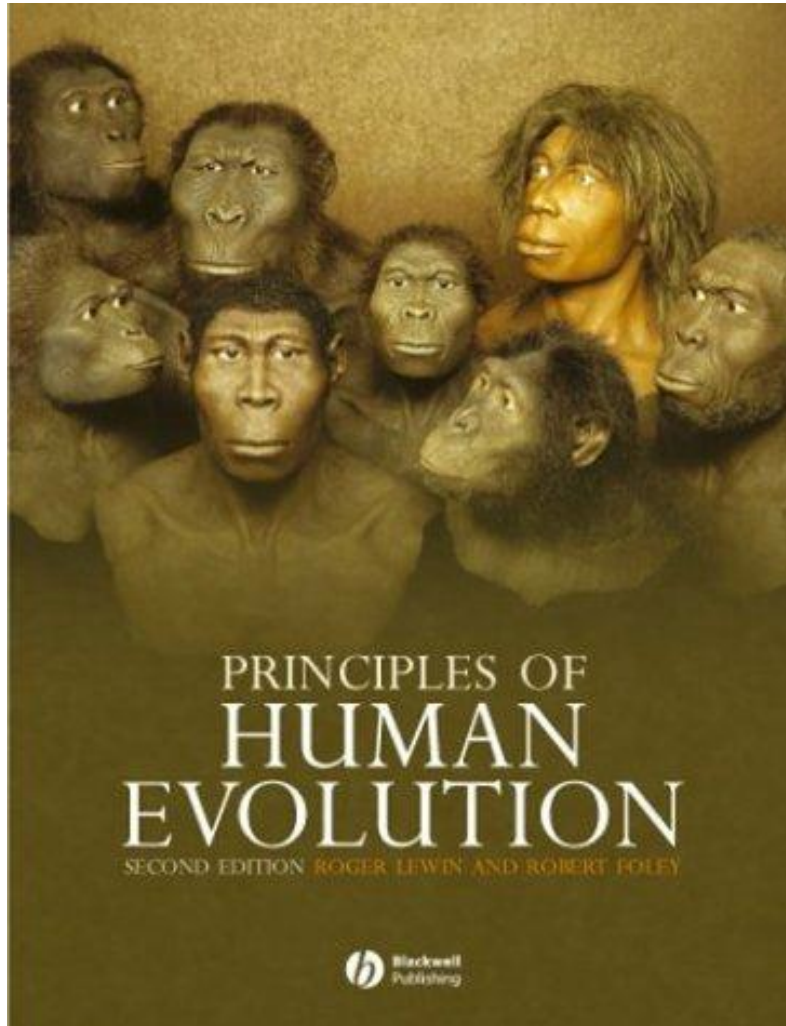


Mitochondrial
DNA and
common
ancestry



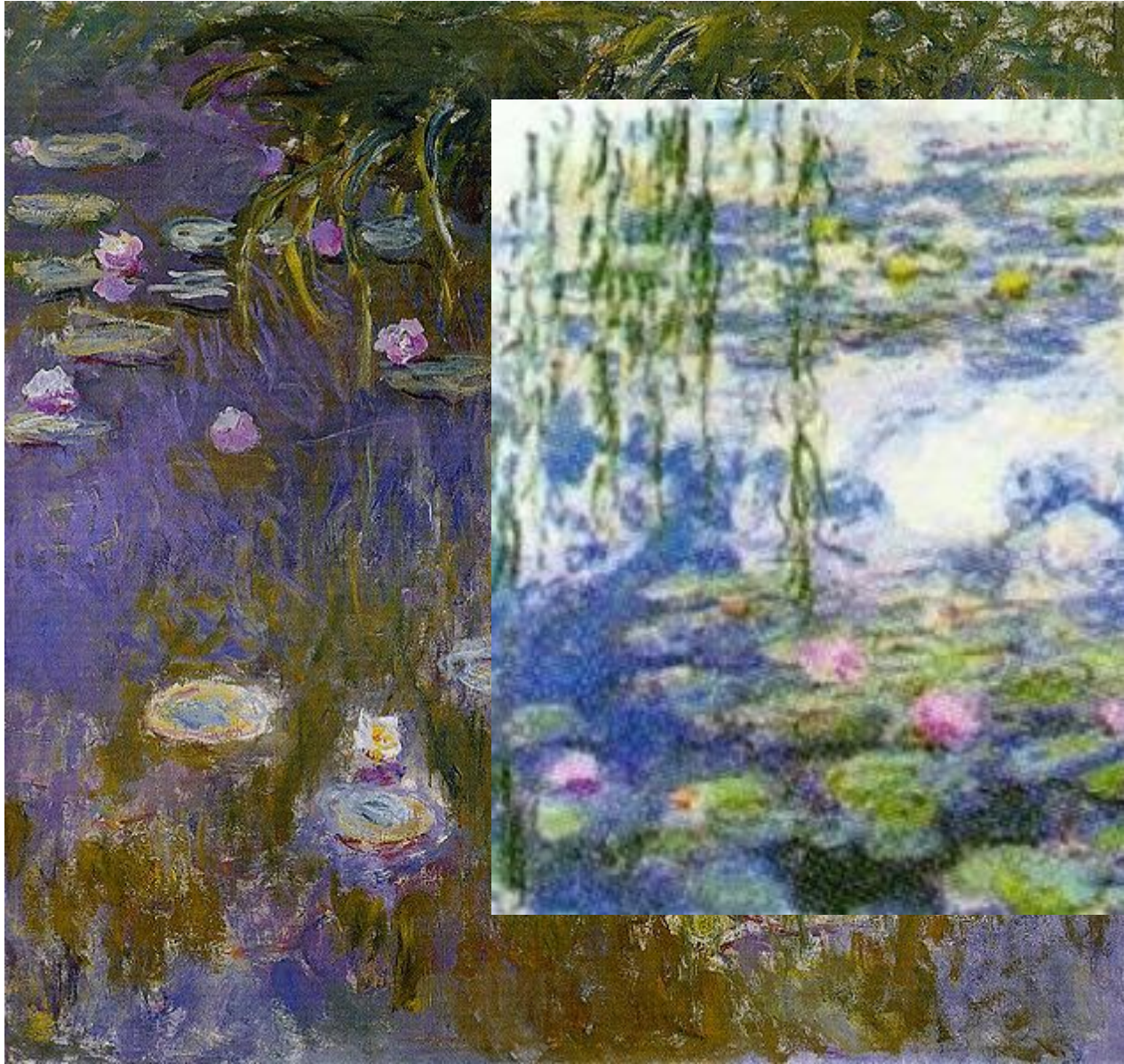
Roger Lewin
(Science writer)

Robert Foley
(Dir. Evolutionary
Studies -
Cambridge)



Roger Lewin
(Science writer)

Robert Foley
(Dir. Evolutionary
Studies -
Cambridge)







Points for home

**“All Scripture is breathed out by
God...”**

(2 Tim. 3:16)

Learn from God in humility!



Points for home

“His invisible attributes...have been clearly perceived...in the things that have been made.”

(Rom. 1:19-20)

See God's hand at work



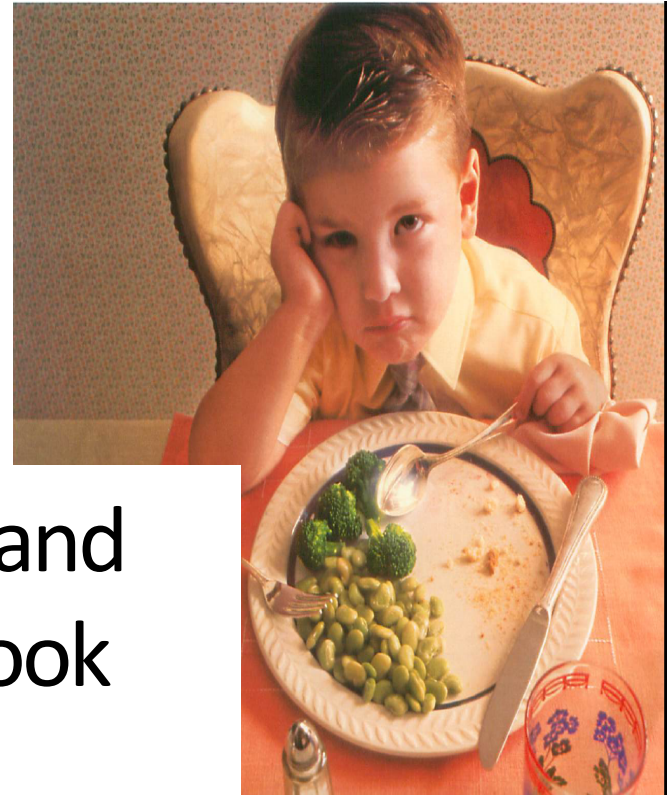
Points for home

**“You knitted me together in my
mother’s womb”**

(Ps. 139:13)

**Give God credit for all we are and
all we can be!**

Want more?
Wantmore@biblical-
literacy.com



Read bibliography and
Email me why a book
interests you!

Get registered for a book give away!