

# ਯੋਗੁੰ ਭਲ ਨਹੀਂ ਆ ਪਵੇਵੀਹੀਏ

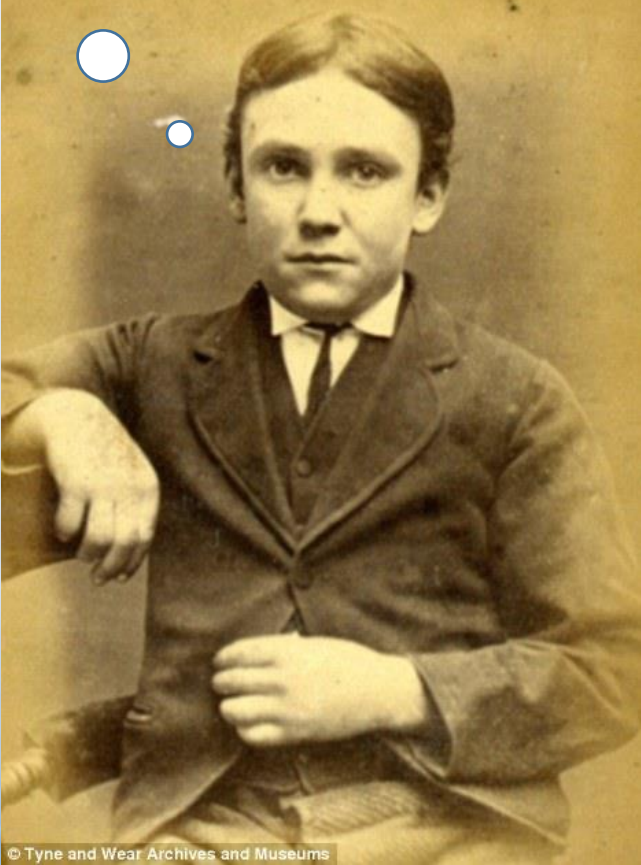
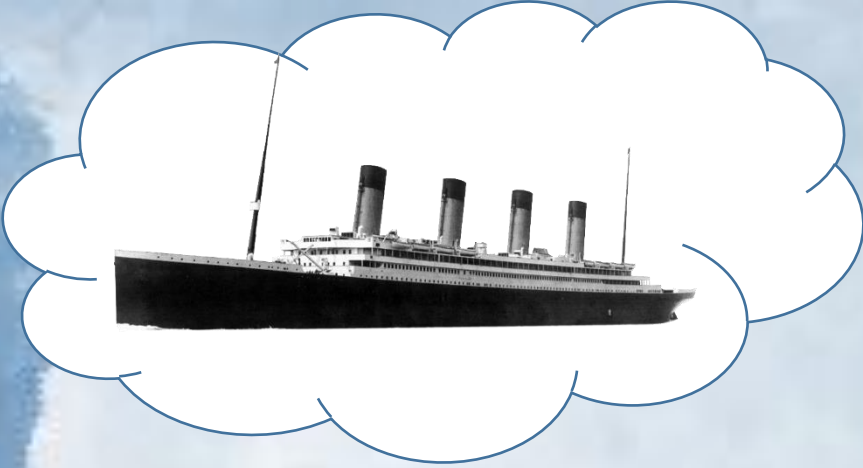
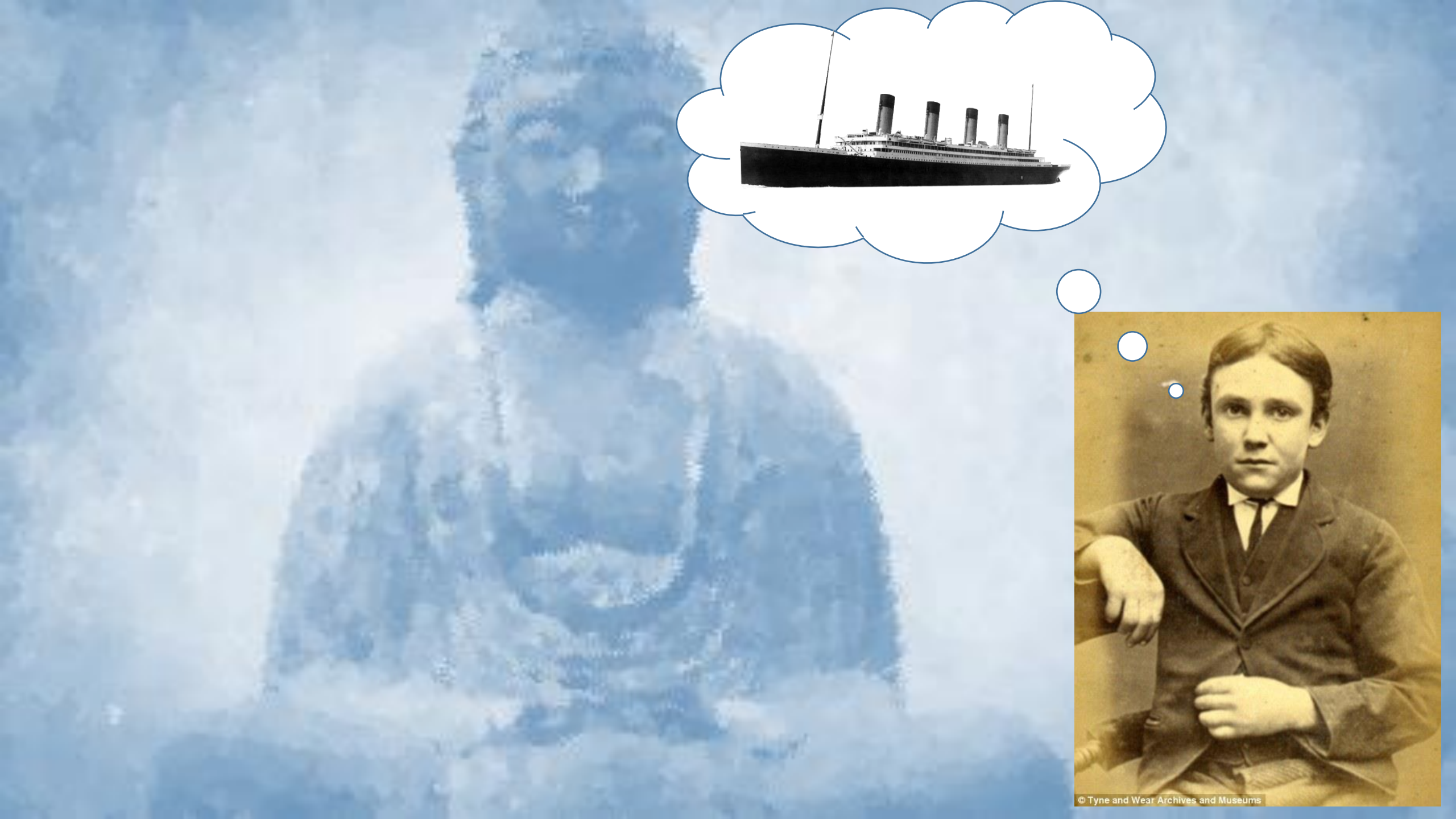
Rev. Melvin Tinker

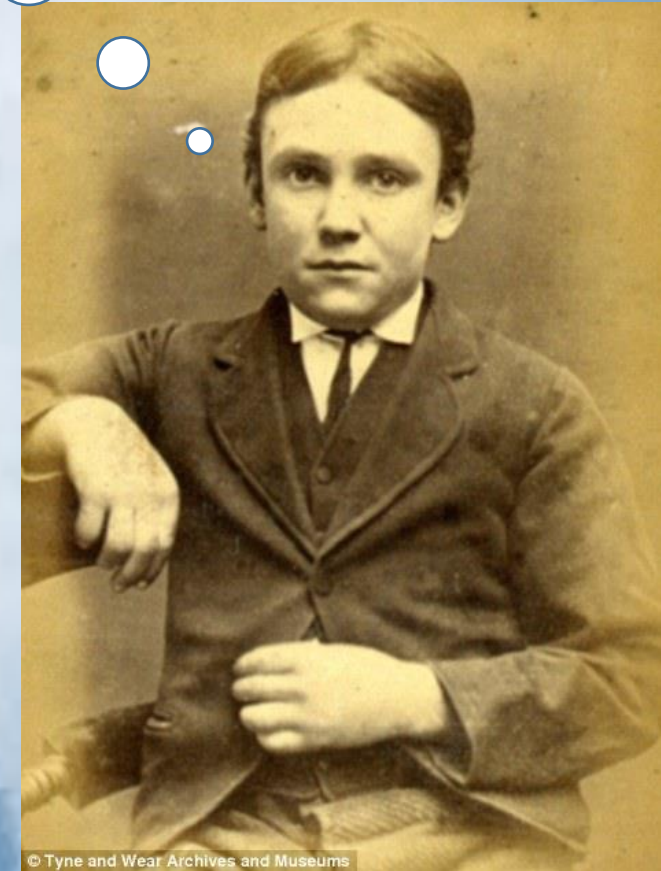
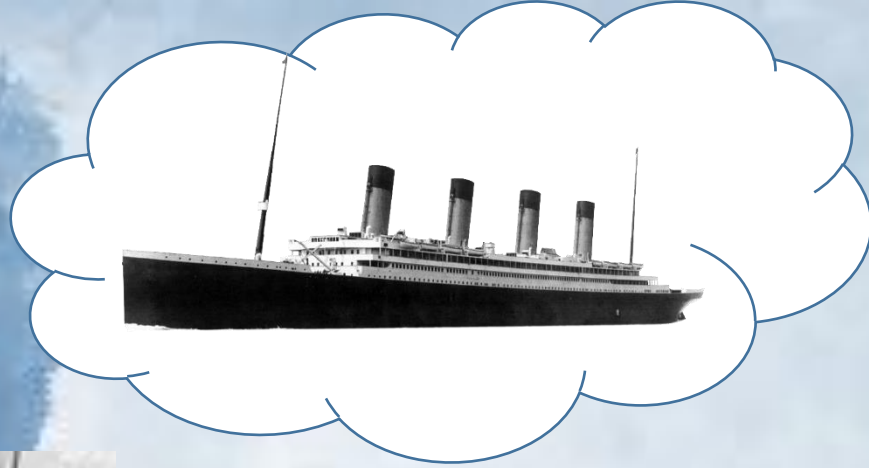




Epcot®











**Houston**

**Hull**

























A blue-toned image of a person with a beard and long hair, possibly a religious figure, with the text "What is its purpose?" overlaid.

What is its purpose?





What is its purpose?

...to make sense out of life



# 4 BIG Questions





# 4 BIG Questions

**1. *Where do I come from?*** The question of origins

# 4 BIG Questions

- 1. *Where do I come from?*** The question of origins
- 2. *Who am I?*** The question of significance



# 4 BIG Questions

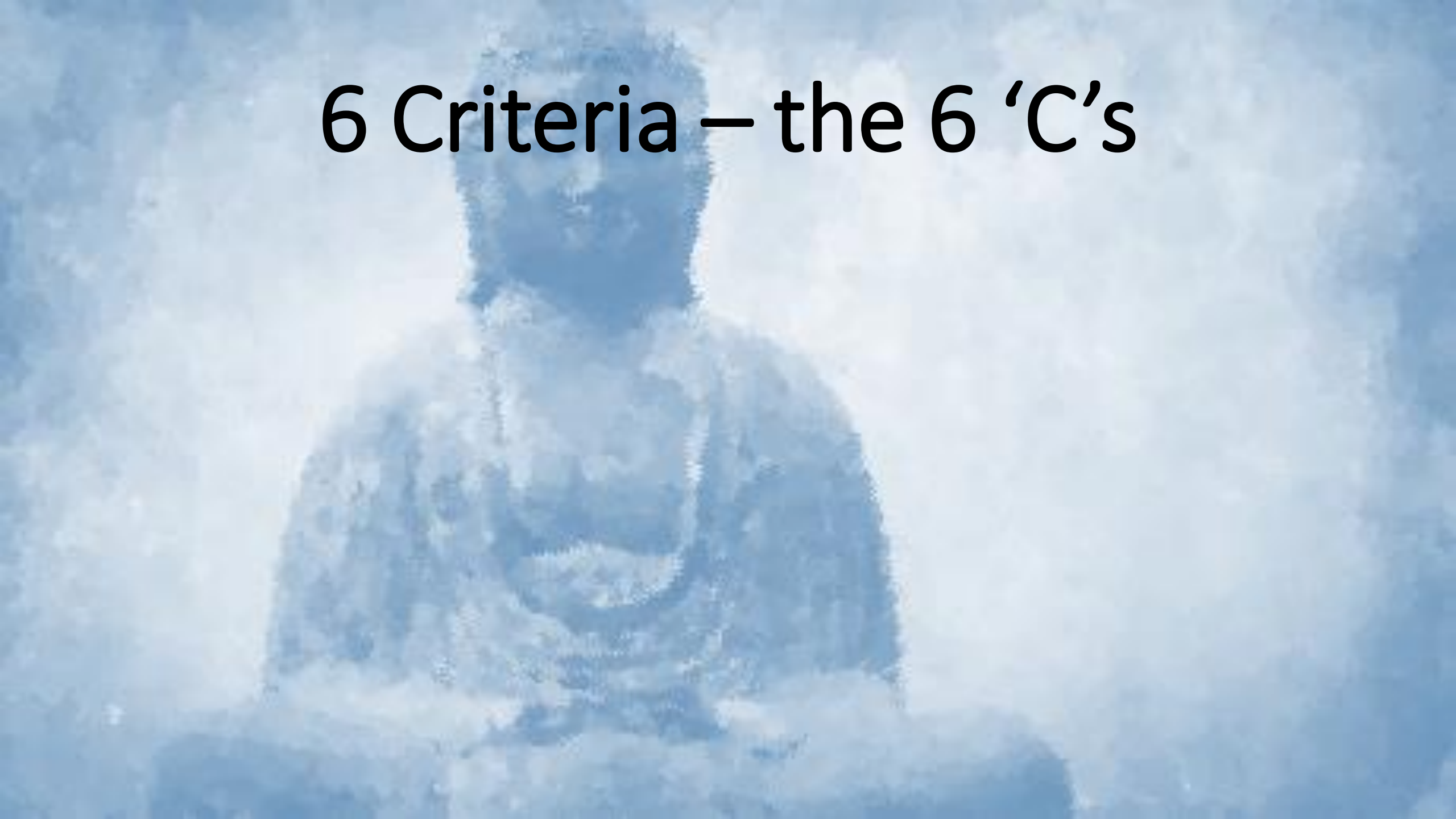
- 1. *Where do I come from?*** The question of origins
- 2. *Who am I?*** The question of significance
- 3. *Why's the world such a mess?*** The question of evil

# 4 BIG Questions

- 1. *Where do I come from?*** The question of origins
- 2. *Who am I?*** The question of significance
- 3. *Why's the world such a mess?*** The question of evil
- 4. *Is there a future?*** The question of purpose



# 6 Criteria – the 6 'C's



# 6 Criteria – the 6 'C's

- **Consistency** - *not* contradictory



# 6 Criteria – the 6 'C's

- **Consistency** - *not* contradictory
- **Coherence** – elements support each other

# 6 Criteria – the 6 'C's

- **Consistency** - *not* contradictory
- **Coherence** – elements support each other
- **Comprehensiveness** – relevant for life



# 6 Criteria – the 6 'C's

- **Consistency** - *not* contradictory
- **Coherence** – elements support each other
- **Comprehensiveness** – relevant for life
- **Congruence** – explains life

# 6 Criteria – the 6 'C's

- **Consistency** - *not* contradictory
- **Coherence** – elements support each other
- **Comprehensiveness** – relevant for life
- **Congruence** – explains life
- **Competitive** – capable of refuting other views

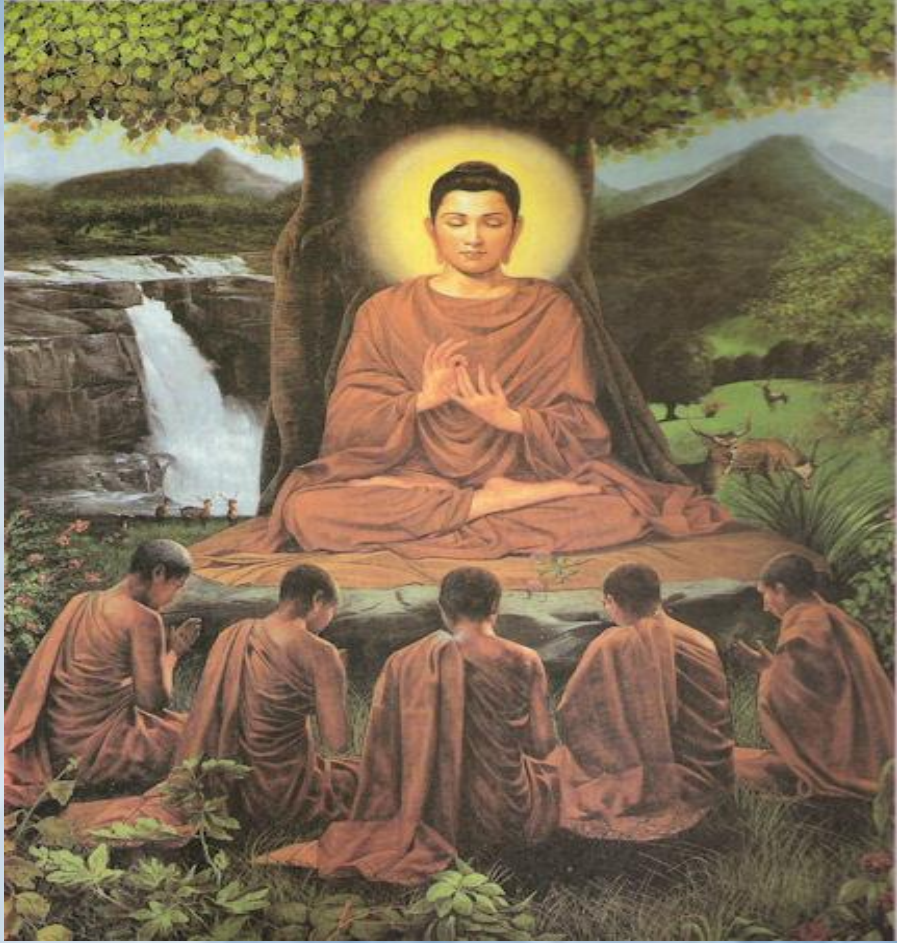


# 6 Criteria – the 6 'C's

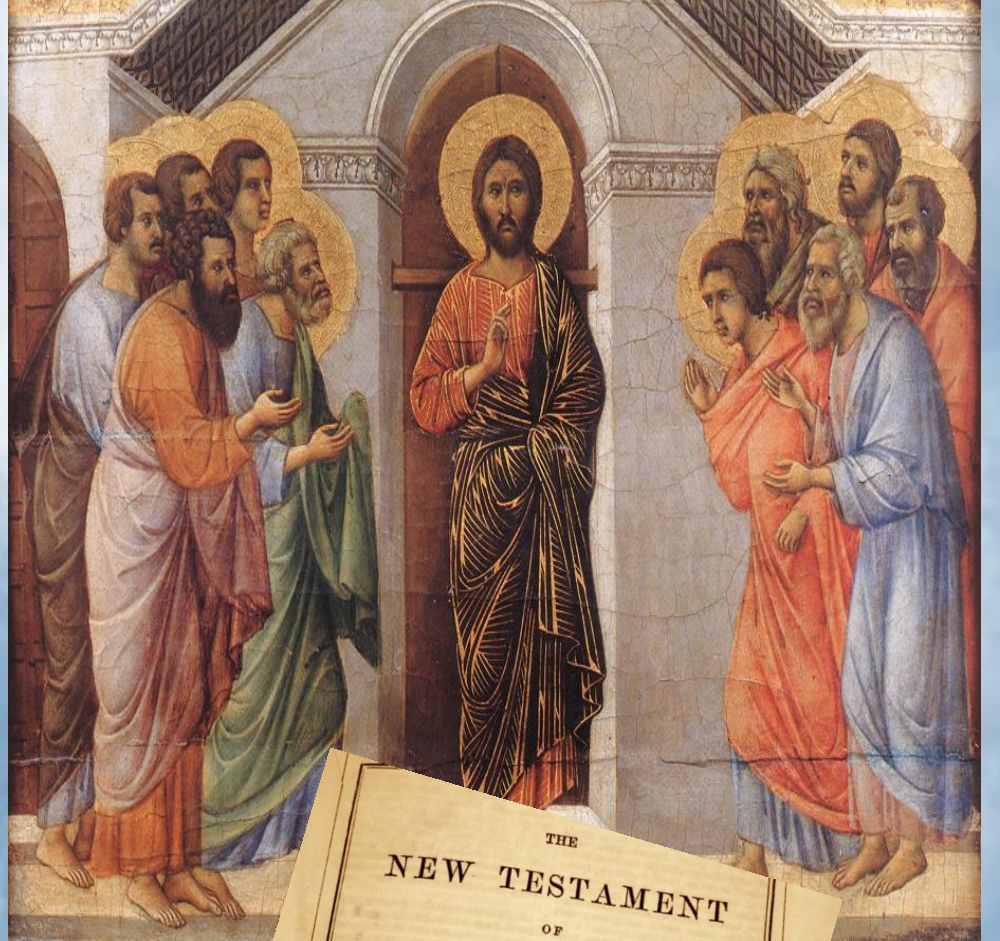
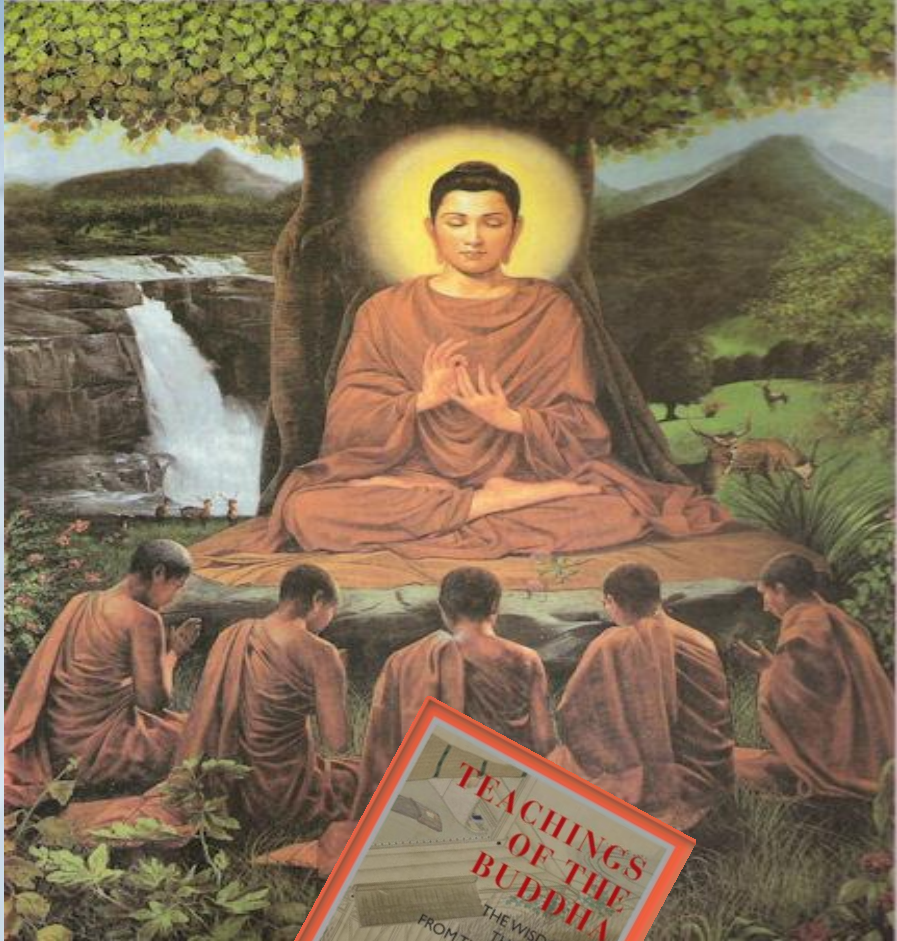
- **Consistency** - *not* contradictory
- **Coherence** – elements support each other
- **Comprehensiveness** – relevant for life
- **Congruence** – explains life
- **Competitive** – capable of refuting other views
- **Commitment** – people can and do follow the belief system



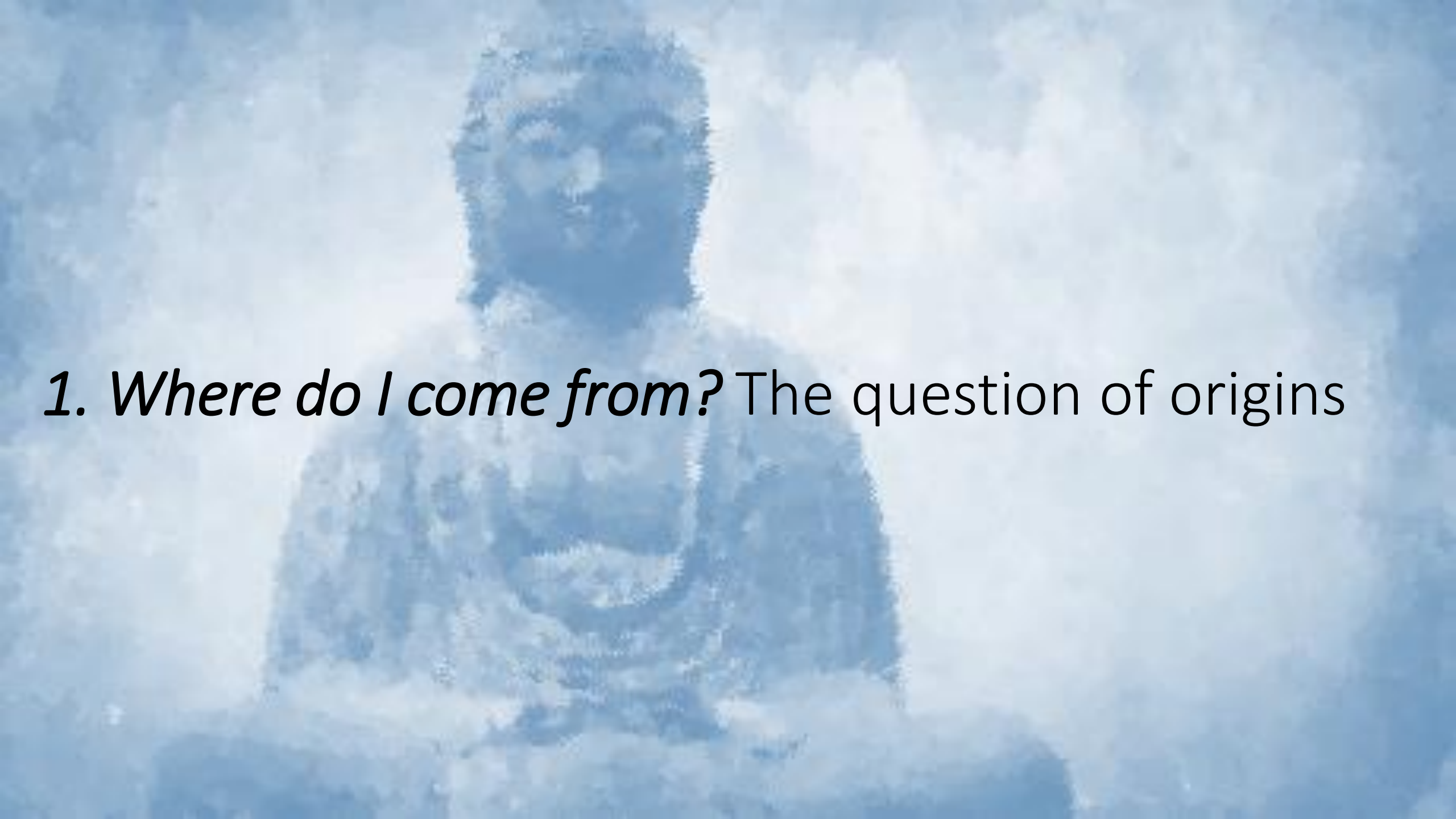












*1. Where do I come from?* The question of origins

*the operation of modern science*





# *the operation of modern science*





***'The rise of science was not an extension of classical learning. It was the natural outgrowth of Christian doctrine. Nature exists because it was created by God. To love and honour God, one must fully appreciate the wonders of his handiwork. Moreover, because God is perfect, his handiwork functions in accord with immutable principles. By the full use of our God-given powers of reason and observation, we ought to be able to discover these principles.'***





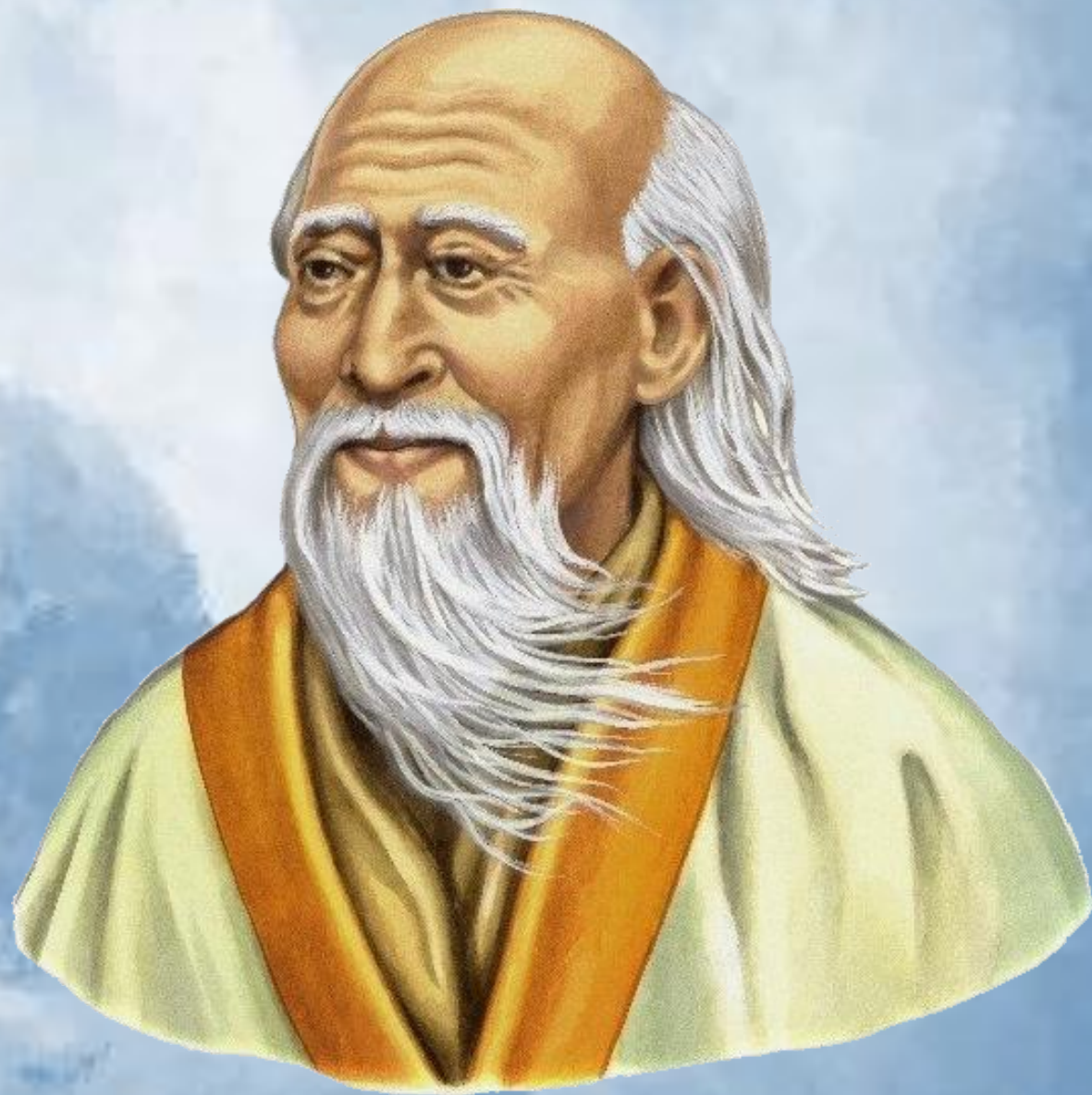
*distinguishing reality from fantasy*





***‘If when I was asleep I was a man dreaming I was a butterfly, how do I know when I am awake I am not a butterfly dreaming I am a man?’***

**(Lao-tse)**





## Chapter 1

IN the beginning God cre  
heaven and the earth.  
And the earth was without  
and darkness was upon  
the Spirit of  
waters.



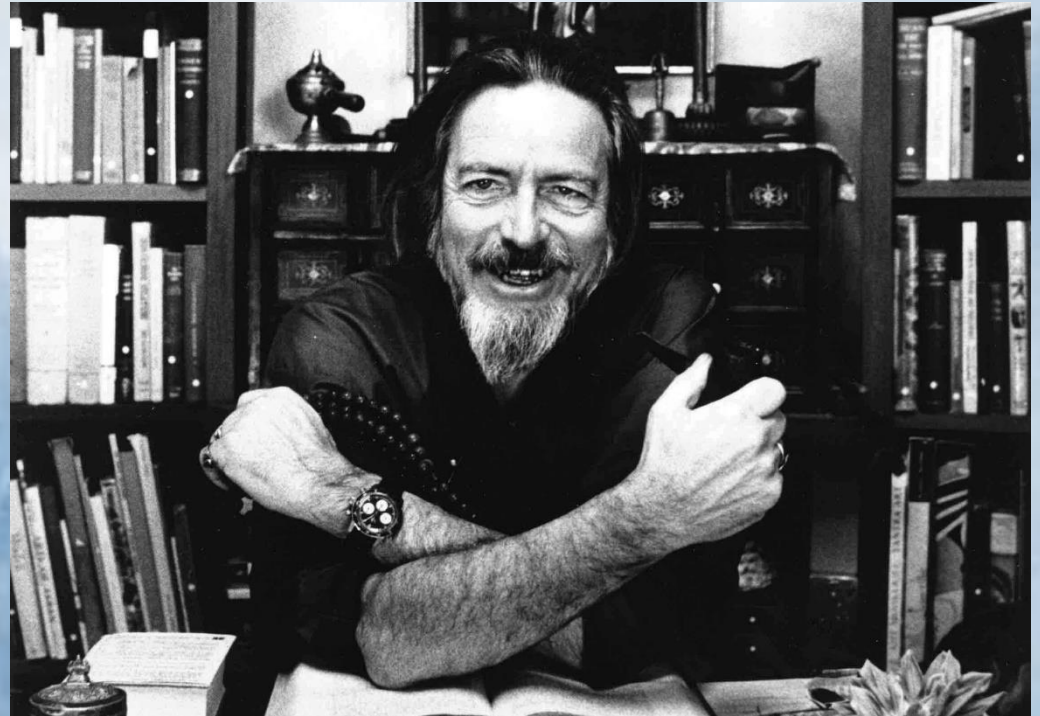






*2. Who am I?* The question of significance

***'God entranced himself  
and forgot the way back,  
so that now he feels  
himself to be man,  
playing-guiltily- at being  
God.'***







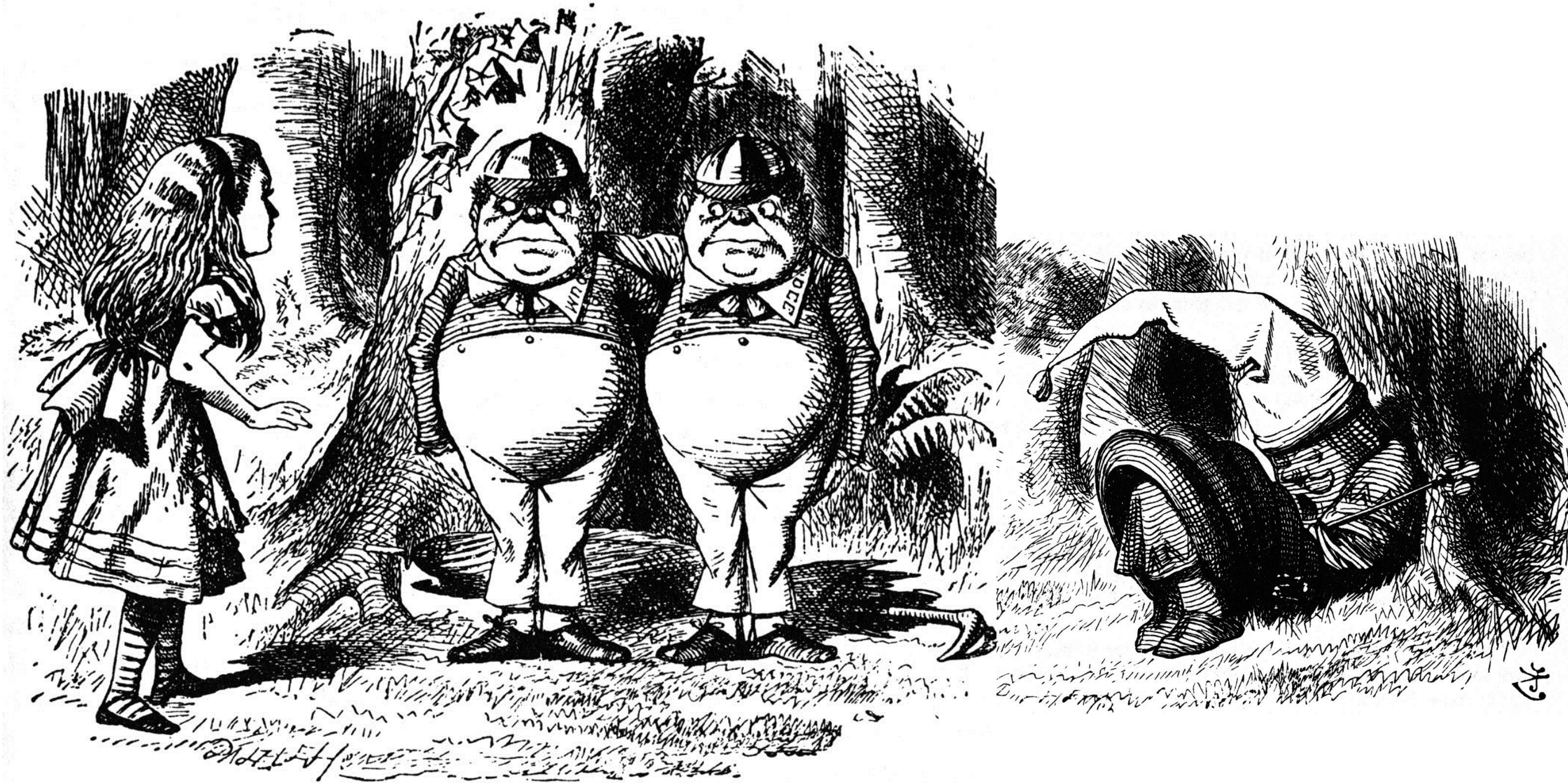
Through  
—THE—  
Looking-  
Glass

AND WHAT ALICE FOUND THERE

by LEWIS CARROLL

illustrated by JOHN TENNIEL









*'We might think of a human person...as being a wave that rises or falls, or a bubble that forms and bursts, on the 'immortal sea's surface... But, if that is what we are, we have to live and die without ever knowing in what relation we stand to the Ultimate Reality that is the source and destination of our being in our ephemeral human life on earth.'*





# 6 Criteria – the 6 'C's

- **Consistency** - *not* contradictory
- **Coherence** – elements support each other
- **Comprehensiveness** – relevant for life
- **Congruence** – explains life
- **Competitive** – capable of refuting other views
- **Commitment** – people can and do follow the belief system

# 6 Criteria – the 6 'C's

- **Consistency** - *not* contradictory
- **Coherence** – elements support each other
- **Comprehensiveness** – relevant for life
- **Congruence** – explains life
- **Competitive** – capable of refuting other views
- **Commitment** – people can and do follow the belief system



# 6 Criteria – the 6 'C's

- **Consistency** - *not* contradictory
- **Coherence** – elements support each other
- **Comprehensiveness** – relevant for life
- **Congruence** – explains life
- **Competitive** – capable of refuting other views
- **Commitment** – people can and do follow the belief system



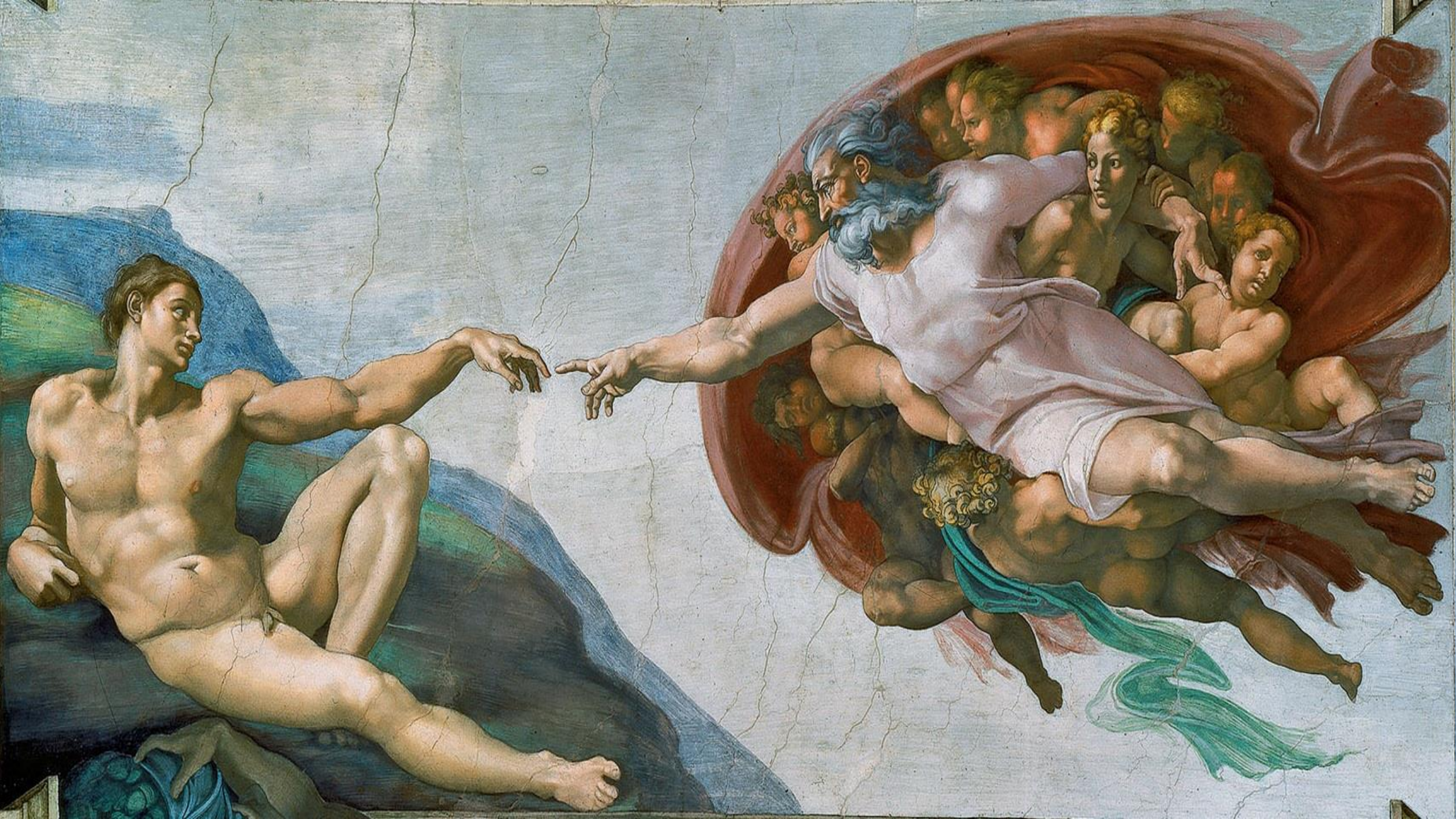


***‘This dewdrop World,  
a dewdrop world it is,  
and still,  
although it is...’***

(Kabayashi Issa – 1762-1826)













**Sir Norman Anderson  
OBE, QC (1908–1994)**





***'On this I am prepared to stake my life. In this faith my son died, after saying, "I'm drawing near my Lord." I am convinced that he was not mistaken.'***

**Sir Norman Anderson  
OBE, QC (1908–1994)**



3. *Why's the world such a mess?* The question of evil



# *Wheel of Dharmma*

## **Two false ways**

- Self Indulgence
- Self Denial

## **Middle Path – *The Four Noble Truths***

1. *Dukkha* – anguish
2. *Samudaya* – cravings or desire
3. *Nirodha* – containment
4. *Marga* – the right track

## **Final State**

- *Nirvana* - extinction





# *Wheel of Dharmma*

## **Two false ways**

- Self Indulgence
- Self Denial

## **Middle Path – *The Four Noble Truths***

- 1. *Dukkha*** – anguish
- 2. *Samudaya*** – cravings or desire
- 3. *Nirodha*** – containment
- 4. *Marga*** – the right track

## **Final State**

- *Nirvana* - extinction





# *Wheel of Dharmma*

## **Two false ways**

- Self Indulgence
- Self Denial

## **Middle Path – *The Four Noble Truths***

- 1. *Dukkha*** – anguish
- 2. *Samudaya*** – cravings or desire
- 3. *Nirodha*** – containment
- 4. *Marga*** – the right track

## **Final State**

- *Nirvana* - extinction







# *Wheel of Samsara*

## **Two false ways**

- Self Indulgence
- Self Denial

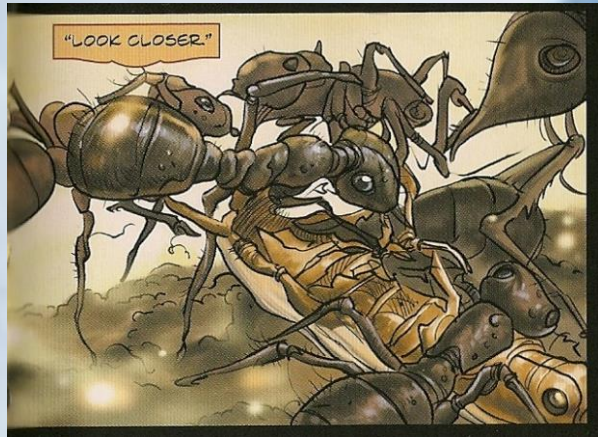
## **Middle Path – *The Four Noble Truths***

- 1. *Dukkha*** – anguish
- 2. *Samudaya*** – cravings or desire
- 3. *Nirodha*** – containment
- 4. *Marga*** – the right track

## **Final State**

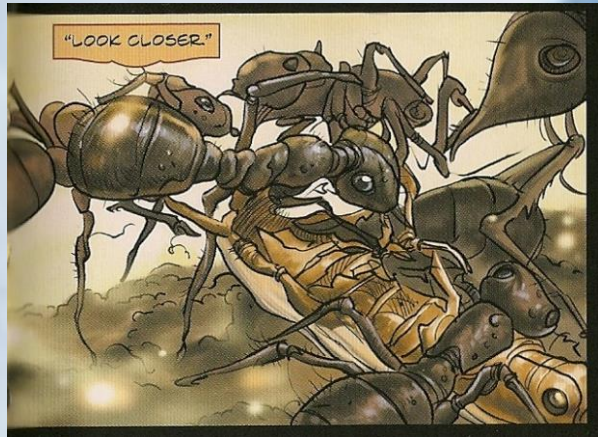
- *Nirvana* - extinction





# Suffering





Suffering  
Explained  
*or*  
Explained away











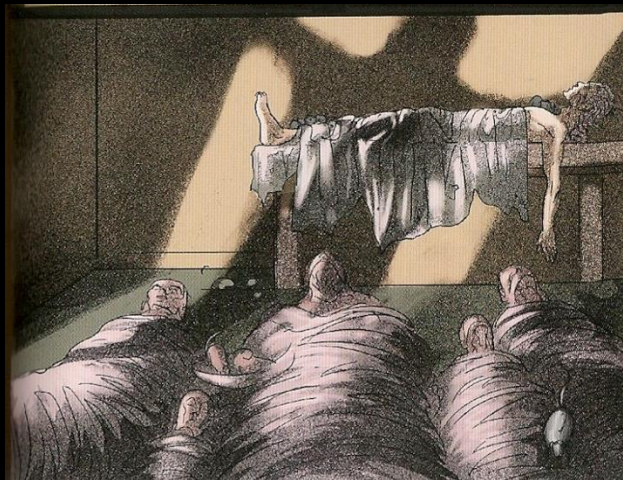
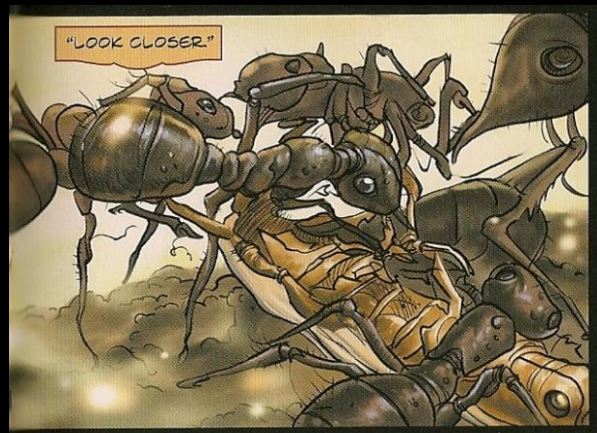
































Points for Home:

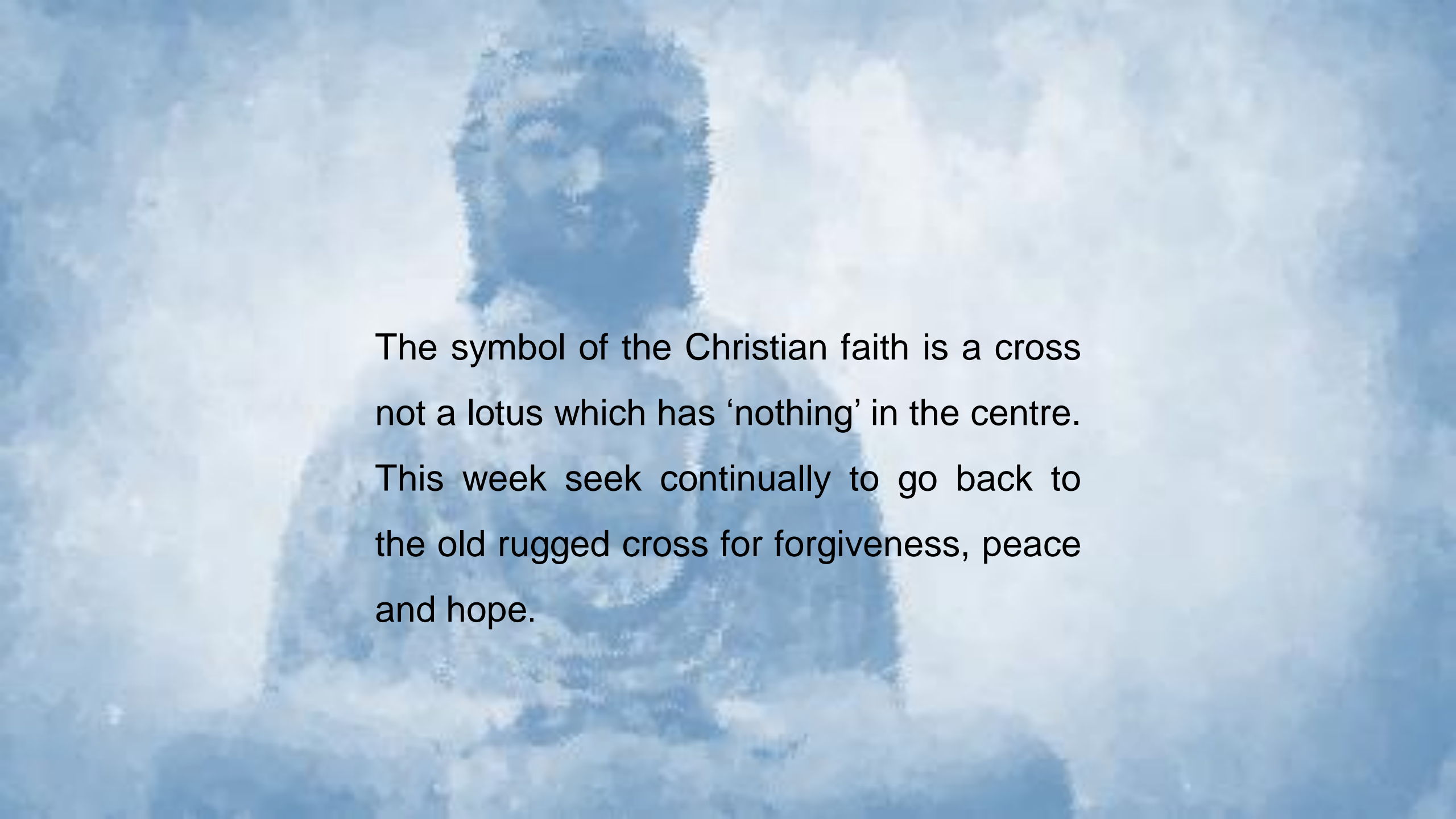
‘All this took place to fulfil what the Lord had said through the prophet: “The virgin will conceive and give birth to a son, and they will call him Immanuel (which means “God is with us”). Matthew 1:22-23.

What difference will it make to your approach to suffering and difficulty knowing that God has been there too- that, in the words of John Stott, he ‘entered our world of flesh and blood, tears and death’?



'Brothers and sisters we do not want you to be unformed about those who sleep in death, so that you do not grieve like the rest of mankind, who have no hope. For we believe that Jesus died and rose again, and so we believe that God will bring with Jesus those who have fallen asleep in him.' 1 Thess 4:13-14.

The writer of Ecclesiastes writes that 'the day of the death of a godly man is better than the day of his birth'- how ill the reality of the resurrection of Jesus prepare you for death and those whom you love? Contrast this with nirvana!



The symbol of the Christian faith is a cross  
not a lotus which has 'nothing' in the centre.  
This week seek continually to go back to  
the old rugged cross for forgiveness, peace  
and hope.



# ਯੋਗੁੰ ਭਲ ਨਹੀਂ ਆ ਪਵੇਵੀਹੀਏ

Rev. Melvin Tinker

